

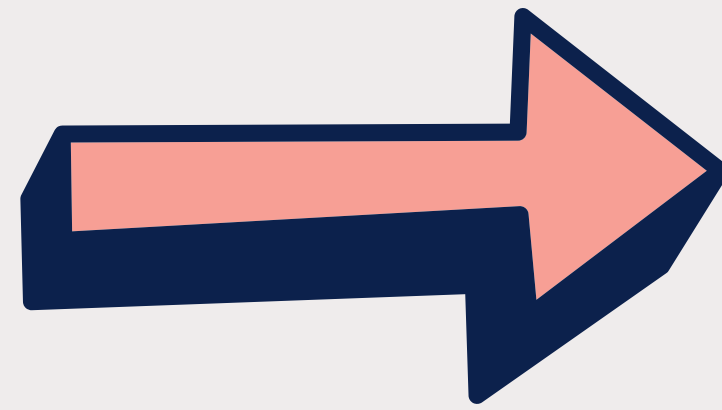


Woolton House Medical Centre



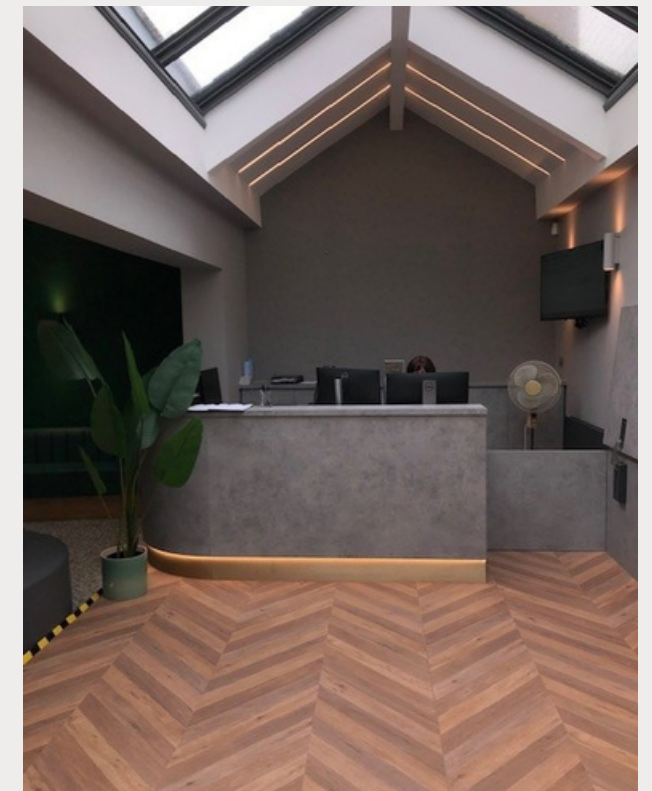
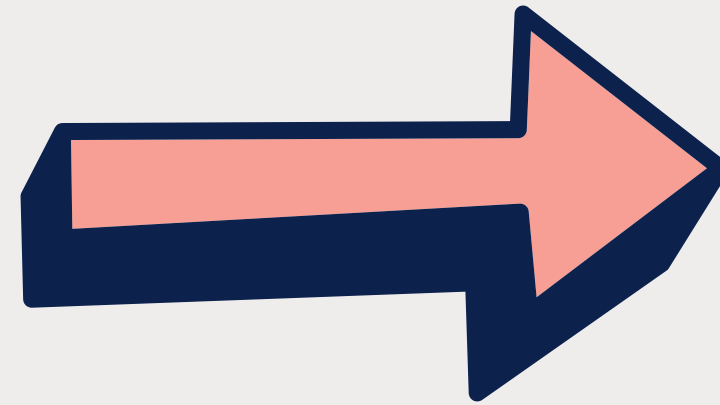
Entrance

As you enter through the main doors, the reception area is straight ahead



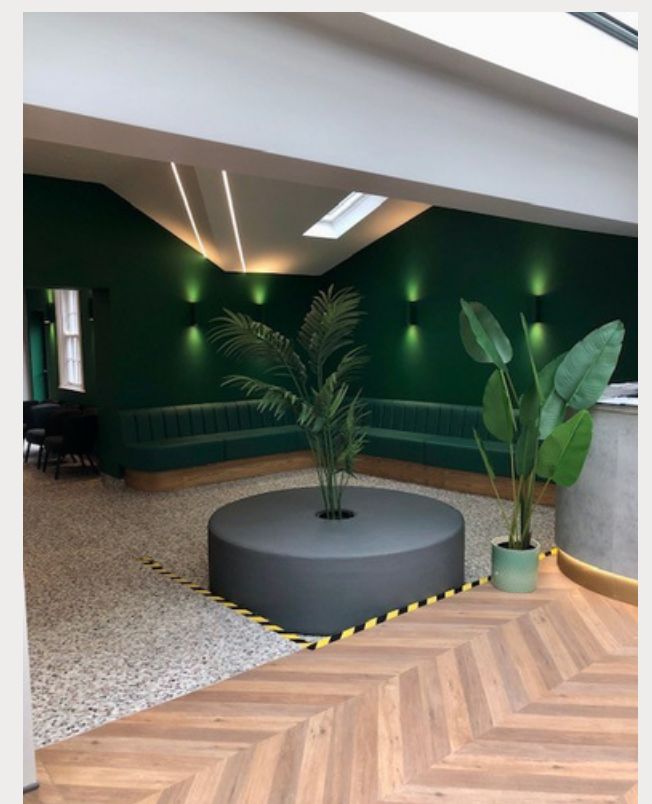
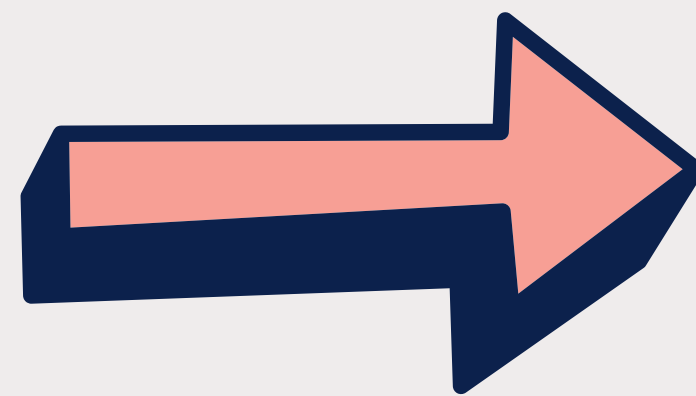
Reception

Upon arrival, inform the staff of your name, or use the self-check-in machine located to the right as you enter the building



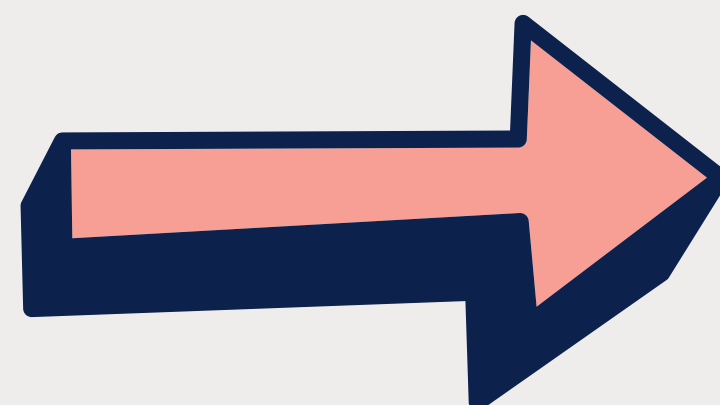
Waiting room

After checking in, wait for your name to be called or look for it on the screen in the waiting area. There is also an upstairs waiting area accessible by stairs or a lift, staff will let you know where to wait



Toilet facilities

Toilet facilities are situated in the waiting area





This surgery does not have a car park.
However, parking is available on nearby roads



Several buses stop near the surgery, including
174, 75, 78, 81, 81A, and 89



Here is a link to Google Maps for directions
<https://maps.app.goo.gl/Bkfx5YQ7JeHvgU6EA>

