

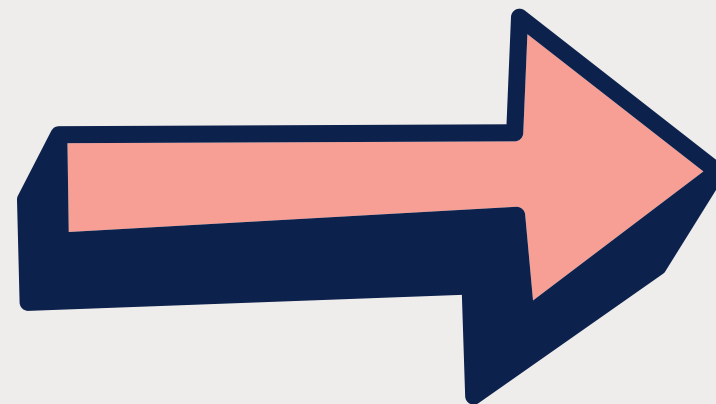


Grassendale Medical Practice



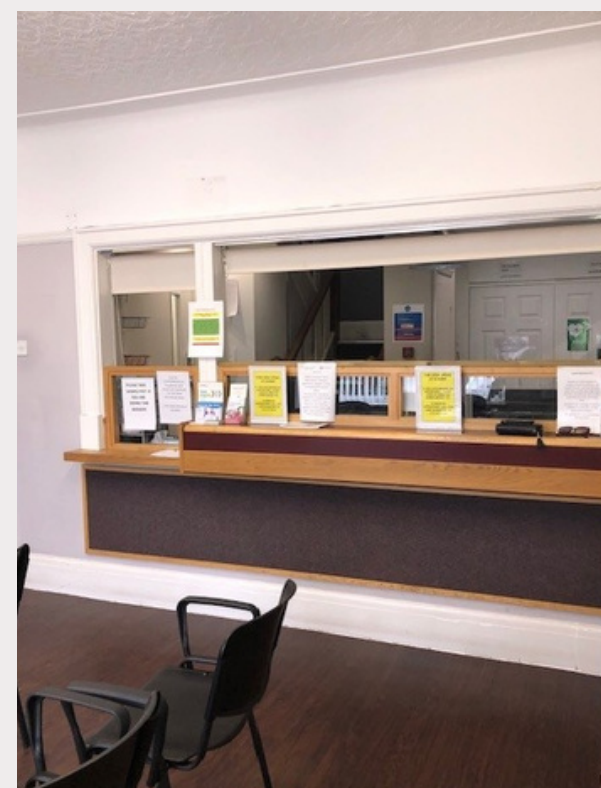
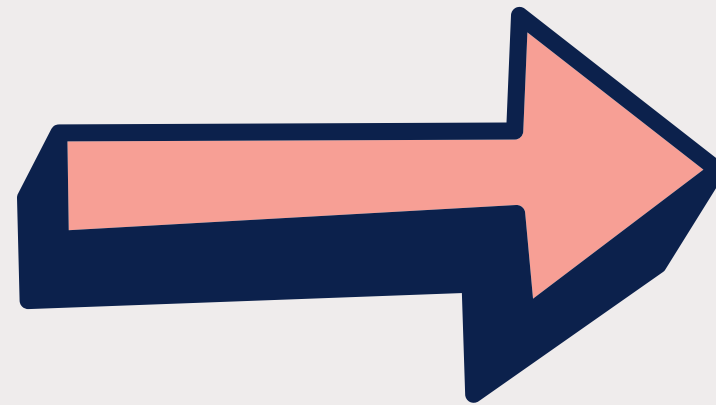
Entrance

As you enter through the main doors, the reception area is directly ahead.



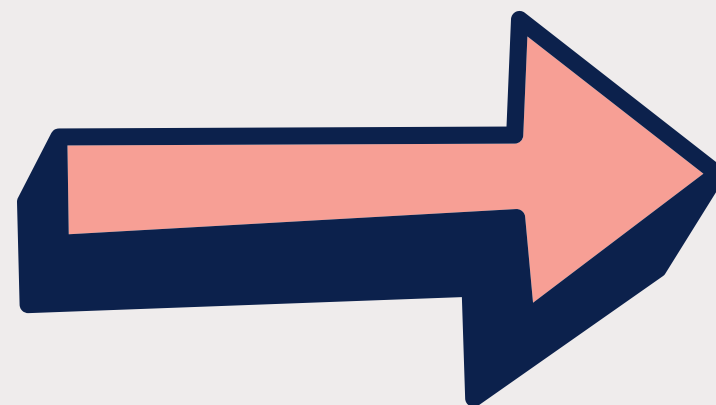
Reception

Upon arrival, the reception desk is to your right. Inform the staff of your name, or use the self-check-in machine located to the left as you enter the reception area.



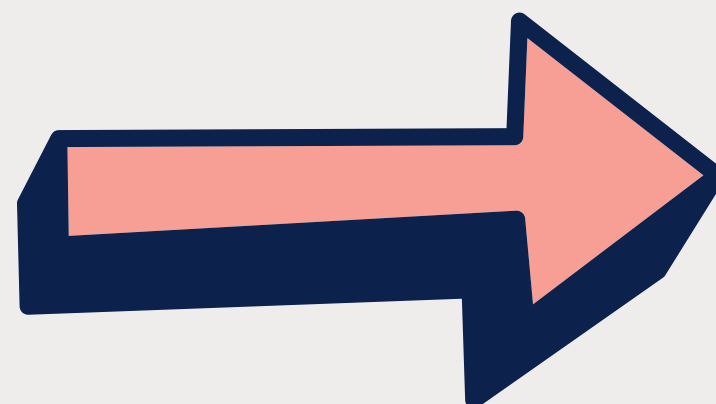
Waiting room

After checking in, you can sit and wait for your name to be called by the clinician.



Toilet facilities

Toilet facilities are located down the corridor on the right as you enter the building.





There is a disabled bay in front of the building with further parking available on nearby roads.



The Garston–Grassendale Circular (167) stops outside the practice, and the Number 82 stops on Aigburth Road, which is a five-minute walk away.



Here is a link to Google Maps for directions
<https://maps.app.goo.gl/HiXPQU1dctgVjqRJ6>

