

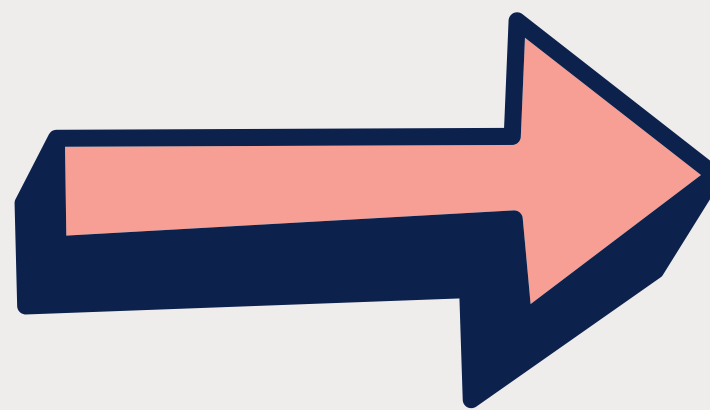


Gateacre Medical Centre



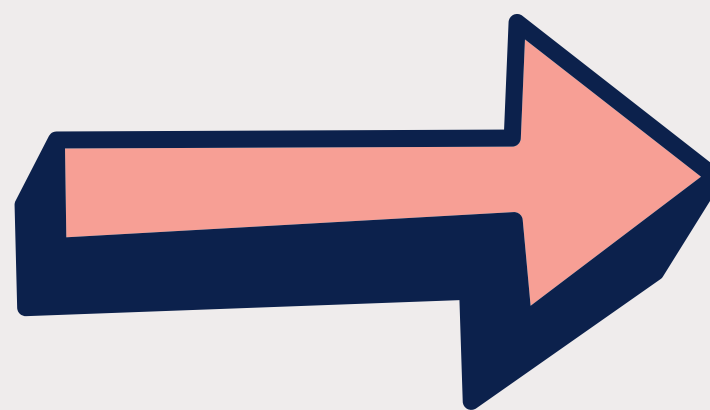
Entrance

You will enter the building here, automatic doors will open leading you into reception.



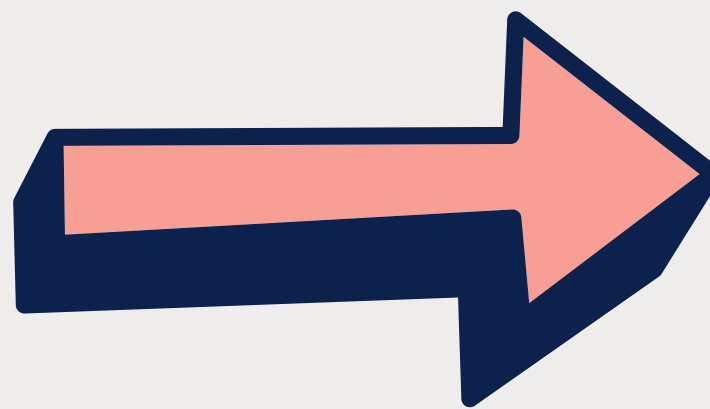
Reception

Upon arrival, the reception desk is on your right. Tell the staff your name, or use the self-check-in to the left as you walk into the waiting room.



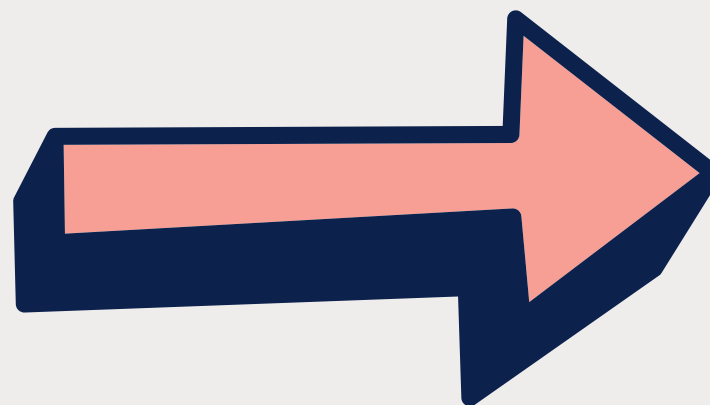
Waiting room

After checking in, you can sit and wait for your name to be called by the clinician.



Toilet facilities

Toilet facilities can be found through the door which leads to clinical rooms to the left.





There is a disabled bay in front of the surgery with further parking available on nearby roads



Buses 3, 3A, 44A, 89, 166, 174 all stop a 1 minute walk from the surgery with other main bus routes stopping at the nearby Belle Vale shopping centre which is a 12 minute walk



Here is a link to google maps for directions
<https://maps.app.goo.gl/cFKgvU6jvSgFkPjh9>

