

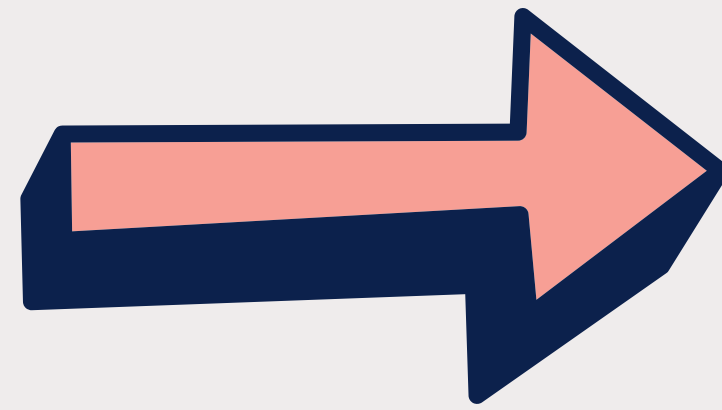


The Village Medical Centre



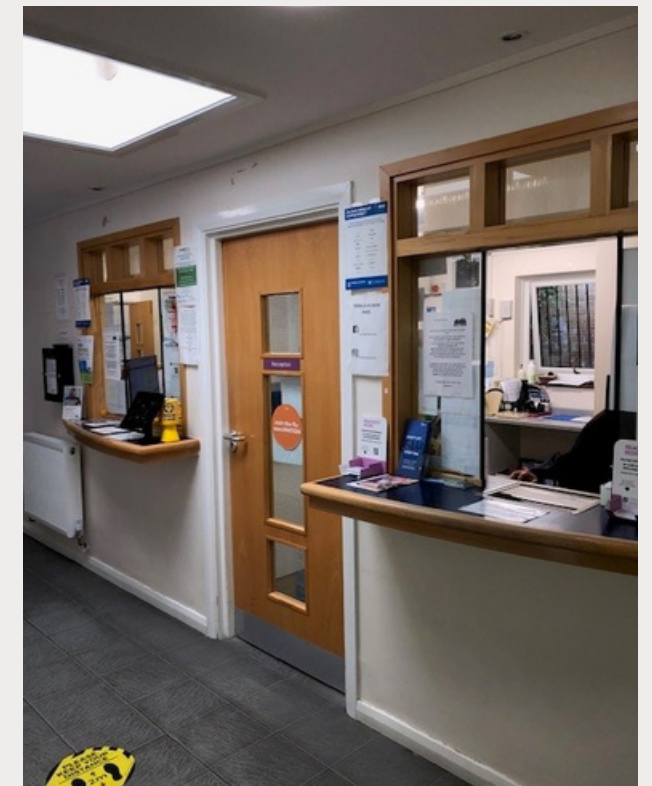
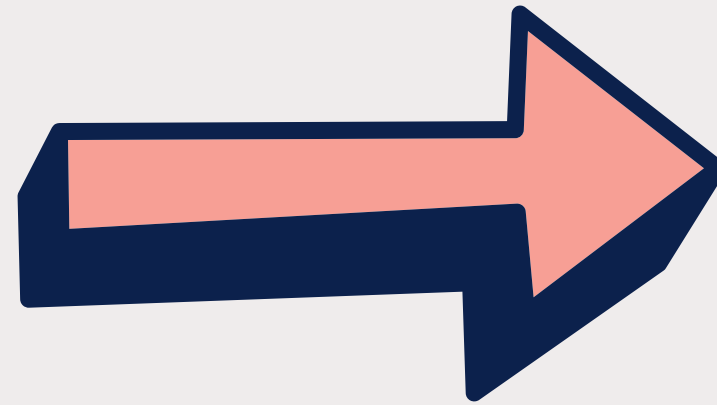
Entrance

As you enter through the main doors, the reception area is on the left



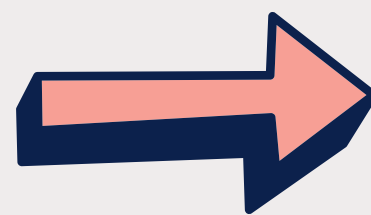
Reception

Upon arrival inform the staff of your name, or use the self-check-in machine located near the reception desk



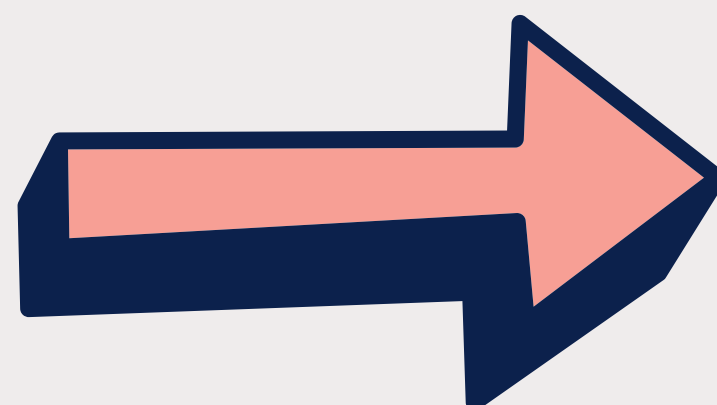
Waiting room

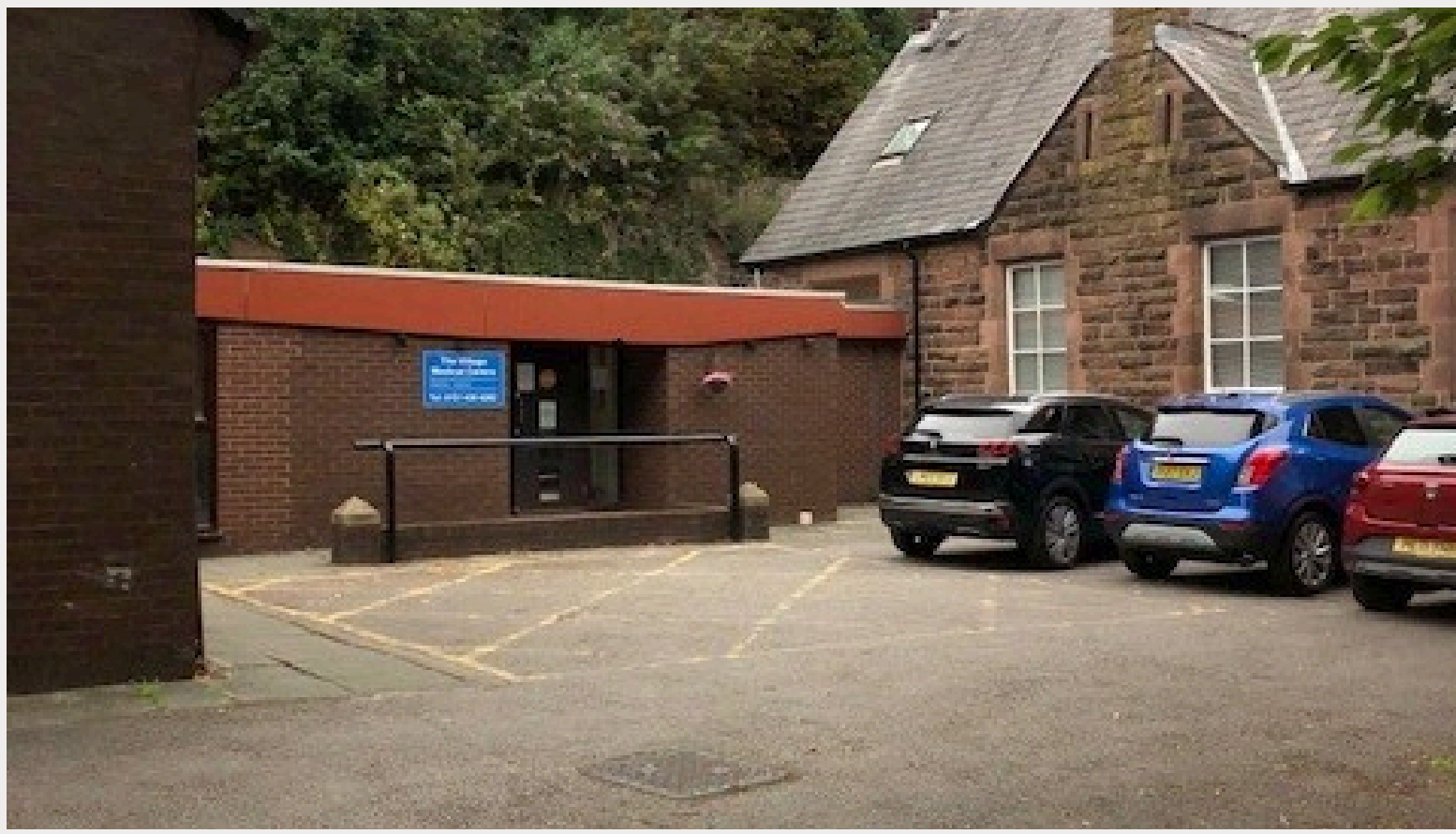
The waiting room is located through the doors to the left of the reception area. Inside the waiting room, you will find a small, quiet seating area



Toilet facilities

Toilet facilities are situated opposite the entrance





There is a car park available at the front of the building



The buses 76, 166, 661, and 174 stop a short walk away from the surgery.



Here is a link to Google Maps for directions
<https://maps.app.goo.gl/S9dy3mJFTjCiqJdA8>

