

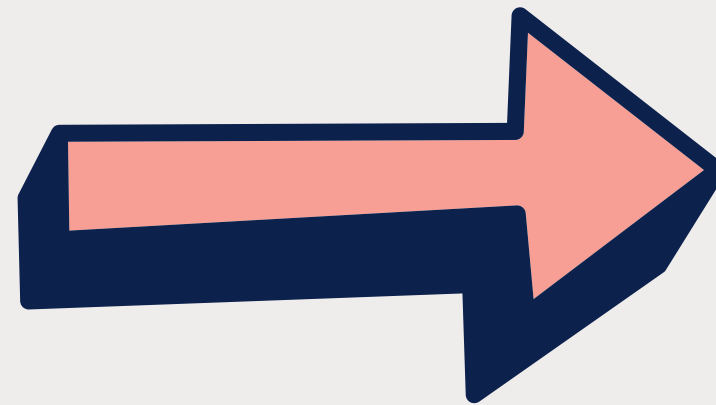


Netherley Health Centre



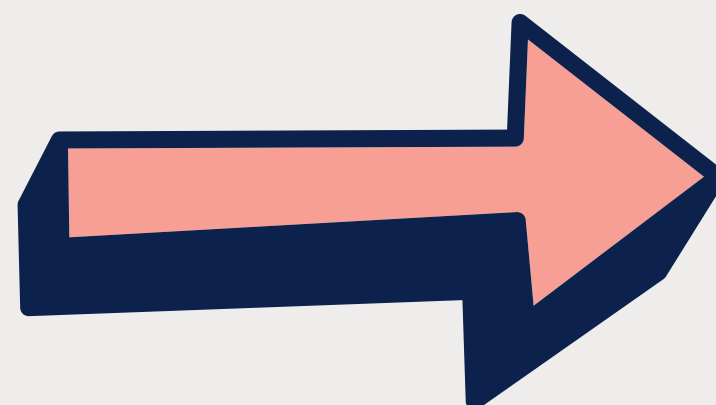
Entrance

As you enter through the main doors, the reception is located just past the automatic doors.



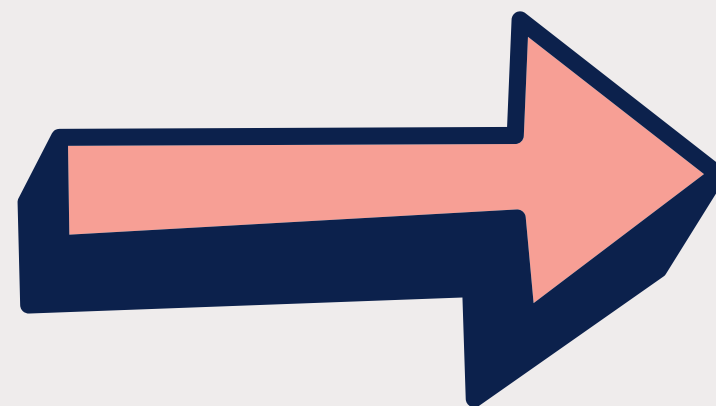
Reception

Upon arrival, the reception desk is on your left. Tell the staff your name.



Waiting room

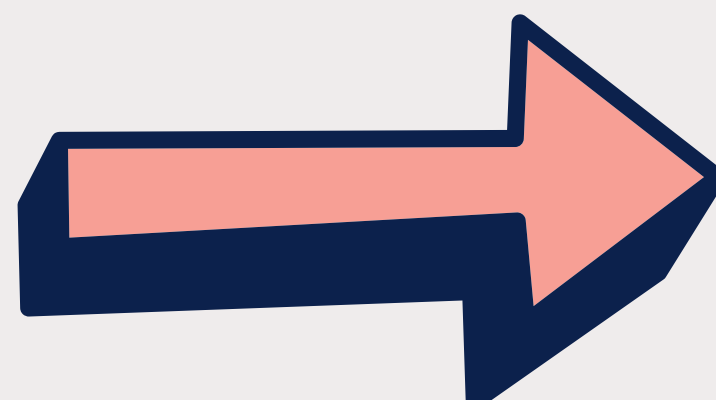
After checking in, you can sit and wait for your name to be called by the clinician.



Toilet facilities

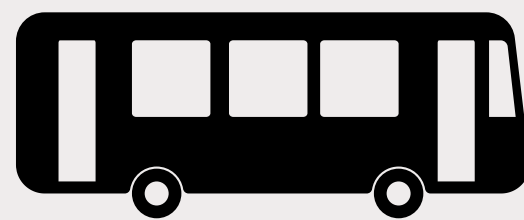
Toilet facilities are located near the main entrance.

A disabled toilet is also available; please ask reception to open the door if you wish to use it.





There is a car park next to the surgery



The buses 79 and 174 stop at the bus stop at the end of the road.



Here is a link to Google Maps for directions
<https://maps.app.goo.gl/C6LKCwd9VixzDyuz9>

